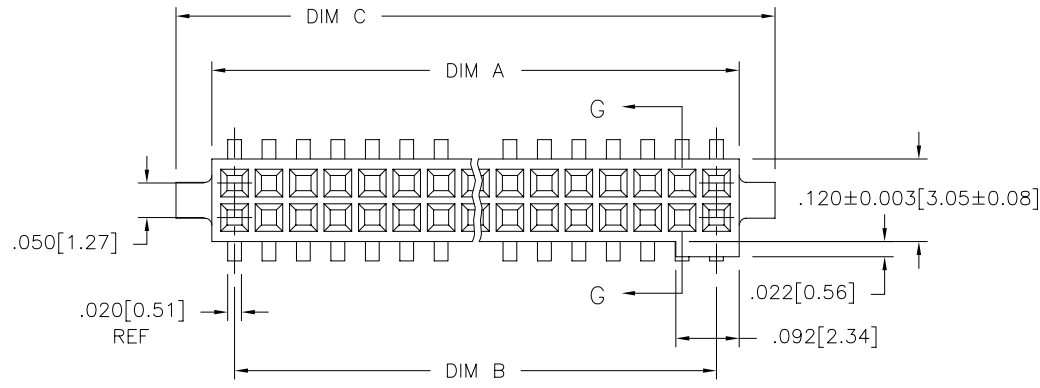
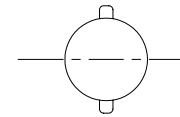


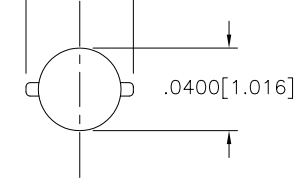
PRODUCT NUMBER  
SEE TABLE



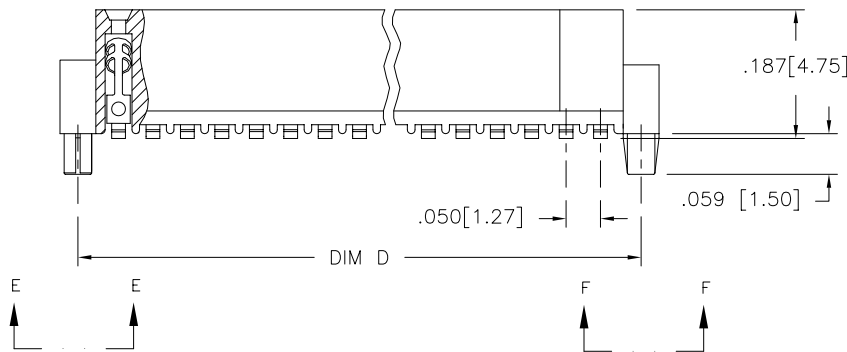
.0520±0.0010[1.321±0.025]



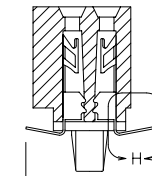
VIEW E-E  
SCALE 3:1



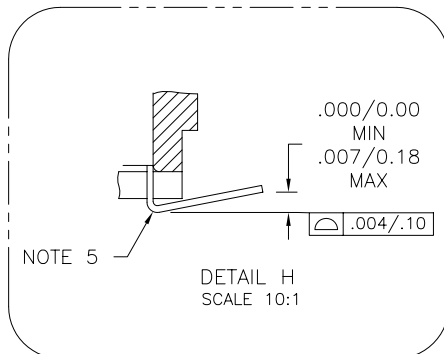
VIEW F-F  
SCALE 3:1



.185±0.015[4.70±0.38]



SECTION G-G



mat'l. code		surface		tolerance		projection		product family	
-		ISO 1302 ✓		ISO 406 ISO 1101				RIBCAGE	
ltr		ecn no		date		tolerances unless otherwise specified		title	
C	V02780	DLW	12/1/00	angles	linear	.xx±.01/0.3		.050/1.27cc V.C.C. SURFACE MT.	
D	V10994	DLW	3/9/01			.xxx±.005/0.13		W/SPECIAL HOLDDOWN	
E	V11674	CRG	6/22/01	0°±2'		.xxx±.0020/0.051		scale 4:1	
F	M05-0123	MHT	6/06/05	dr	E. Kropienicki	7/28/98		dwg no	
G	M06-0225	ERE	06/12/06	enr	D. WHITING	7/28/98		sheet 1 of 2 size	
H	M06-0370	MHT	9/26/06	chr	D. WHITING	7/28/98		84699 A3	
				app		D. WHITING		7/28/98	
sheet index		revision sheet		H H				type Product Customer Drawing	
		1 2							

PRODUCT NO. NOTE 8	SIZE	DIM A	DIM B	DIM C	DIM D	TAPE WIDTH PITCH	PIECES PER REEL	NOTE
84699-605	2 X 5	.266/6.76	.200/5.08	.370/9.40	.3200/8.128			
-610	2 X 10	.516/13.11	.450/11.43	.620/15.75	.5700/14.478			NOTE 6
-615	2 X 15	.766/19.46	.700/17.78	.870/22.10	.8200/20.828			
-620	2 X 20	1.016/25.81	.950/24.13	1.120/28.45	1.0700/27.178	44mm/12mm	500	NOTE 7
-625	2 X 25	1.266/32.16	1.200/30.48	1.370/34.80	1.3200/33.528	56mm/12mm		
-630	2 X 30	1.516/38.51	1.450/36.83	1.620/41.15	1.5700/39.878			
-635	2 X 35	1.766/44.86	1.700/43.18	1.870/47.50	1.8200/46.228			
-640	2 X 40	2.016/51.21	1.950/49.53	2.120/53.85	2.0700/52.578			NOTE 6
-645	2 X 45	2.266/57.56	2.200/55.88	2.370/60.20	2.3200/58.928			
84699-650	2 X 50	2.516/63.91	2.450/62.23	2.620/66.55	2.5700/65.278			

NOTES:

- ① HOUSING MATERIAL :  
GLASS FILLED THERMOPLASTIC FLAME RETARDANT PER UL 94V-0  
COLOR: BLACK
- ② TERMINAL MATERIAL : BeCu
- ③ TERMINAL PLATING :  
6XX .30u"/.76u MIN HARD GOLD OVER Ni ON CONTACT ZONES.  
100u"/2.54u MIN Sn OVER Ni IN SOLDERING ZONES.  
OTHERWISE GOLD FLASH OR UNPLATED.
4. APPLICATION INFORMATION :
  - A. RECOMMENDED MOUNTING PAD PATTERN IS SHOWN IN FIGURE "A".
  - B. MATING PINS TO BE .0176/.447 TO .0181/.459 THICK.
  - C. MATING PIN TIPS TO BE IN TRUE POSITION TO MATING GRID WITHIN .006/.15 DIA.
  - D. SUGGESTED MATING PIN LENGTH .130/3.30 ±.010/.25.
- ⑤ LEAD TIPS TO BE ABOVE HEEL UP TO .007/.18 MAX.  
COPLANARITY TO BE MEASURED AT LOWEST POINT (HEEL).
- ⑥ ADD "CT" TO END OF DASH NUMBER FOR CONNECTOR WITH VACUUM CAP IN TUBE.
- ⑦ ADD "TR" TO END OF DASH NUMBER FOR CONNECTOR IN TAPE AND REEL WITH CAP. TOOLED ONLY FOR NOTED CONNECTORS.
- ⑧ ADD "LF" SUFFIX AT THE END OF PART NUMBER FOR LEAD FREE OPTION.
9. THIS PRODUCT MEETS EUROPEAN UNION DIRECTIVES AND OTHER COUNTRY REGULATION AS DESCRIBED IN GS-22-008.
10. THE HOUSING WILL WITHSTAND EXPOSURE TO 260°C PEAK TEMPERATURE FOR 20 SECONDS IN A CONVECTION, INFRA-RED OR VAPOR PHASE REFLOW OVEN. SEE APPLICATION NOTES/PROCEDURES IF THEY ARE AVAILABLE.

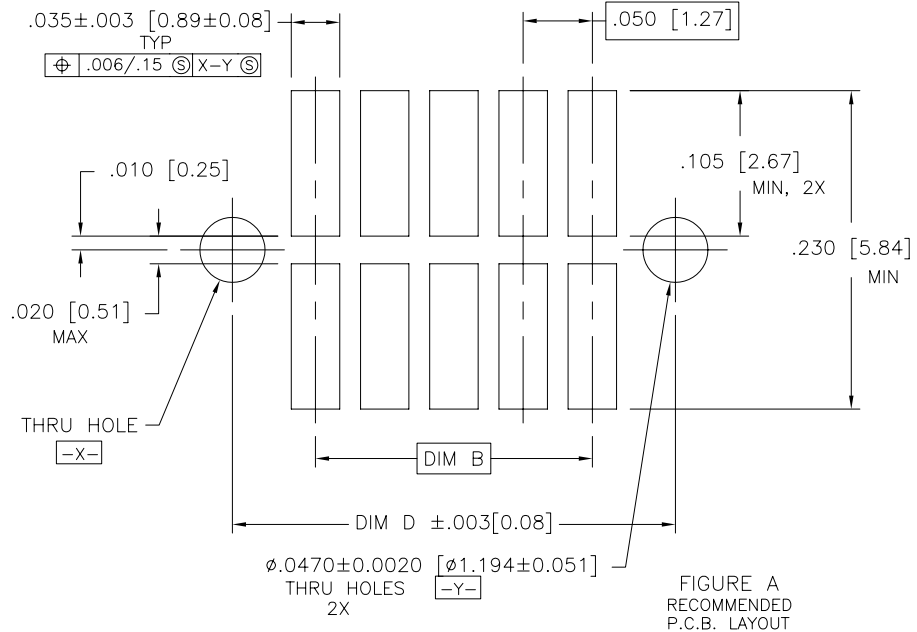


FIGURE A  
RECOMMENDED  
P.C.B. LAYOUT

mat'l. code		surface		tolerance		projection		product family	
-		ISO 1302 ✓		ISO 406		ISO 1101		RIBCAGE	
ltr		ecn		nldr		date		title	
H								.050/1.27cc V.C.C. SURFACE MT. W/SPECIAL HOLDDOWN	
								dwg no	
								84699	
								sheet 2 of 2 size	
								A3	
								type Product Customer Drawing	
sheet index		revision sheet							